

MTG MONTALGUEDES

INVESTMENTS & CONSTRUCTION INC



Container House

Steel structure

Modular villa

Portable toilet

Introduction & Products:

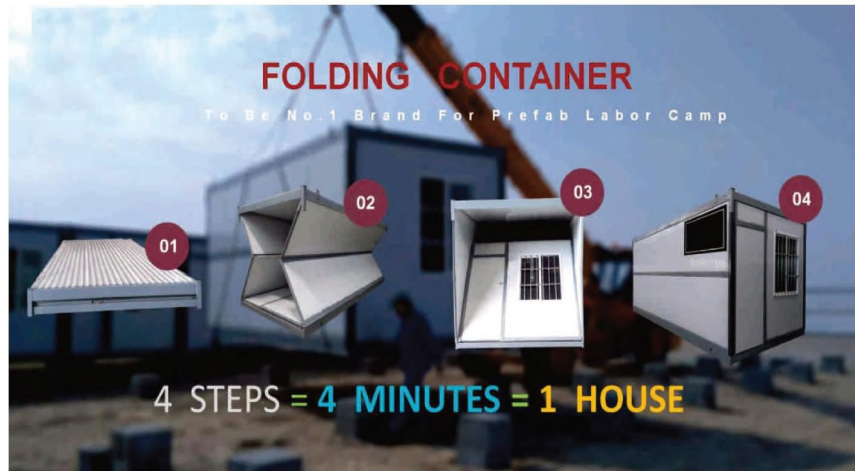
MTG is a Portuguese company of transformation, sale of containers, wooden houses, remodeling, construction, architecture, decoration and engineering.

We are a manufacturing unit with our own locksmithing, we modify, assemble, transform, construct in our unit in Gondomar. Growth has been sustained and balanced, and we soon intend to create new work units.

Our products including Container Houses, Prefab Labor camps, Steel Structures, Modular Villas, Portable Toilets & Security Posts.

FOLDING CONTAINER HOUSE

(This folding container house is widely used for labor camp, office & store room.
Loading: 1 x 40 HQ can load 10 units.)

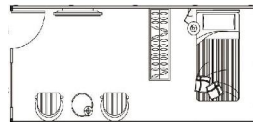


Size: L5.8 * W2.5 * H2.45M

Water Absorption
1m² / 1%

Features:

1. Galvanized steel structure.
2. 40mm fireproof EPS sandwich panel for wall & roof.
3. Aluminum sliding windows with security bar.
4. Fireproof EPS sandwich panel door.
5. 15mm MGO board for floor.
6. When is folded, the height is only 400mm.



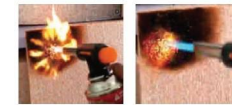
Styles:

7 days we can build a city



Technical Parameters

Dimension (mm)	5800*2400	Rock wool	60-80
Thermal Conductivity (W/m·K)	0.04	82% filling	A fireproof



100% fire proof

Projects:



12 sets



Roof



Base



Extended base

Features:

1. Come with complete roof & floor.
2. Electric wires run over ceiling, including DB, breaker, power inlet & sockets.
3. Fully Galvanized Steel Structure.
4. 50/75mm EPS/IEPS/Roc wool insulation.
5. Sandwich panel for wall. Windows with security bar.
6. PVC indoor lining.



Designs:

Type A H6*W2.4*H2.87M



Type B



Type C



Projects:



DETACHABLE CONTAINER HOUSE

(This container house is widely used for office, apartment & shop. Loading: 1x40HQ can load 13 units.)



Size: 3MX6MX2.8H

Features:

1. Galvanized steel structure .
2. 50mm fireproof IEPS/EPS sandwich panel for wall.
3. 0.476mm steel sheet+50mm glass wool+ steel sheet ceiling for roof.
3. Double glass aluminum sliding windows.
4. Steel door.
5. 18mm MGO board for floor.
6. Modern design. Outside with corrugated shape&inside with wooden coating.



IEPS sandwich panel

Advantages:



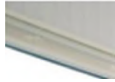
1. Galvanized steel structure.
2. Fireproof sandwich panel.
3. Wooden color for indoor.
4. Steel frame for container house.
5. Steel structure roof frame.

Projects:



ExPANDABLE CONTAINER HOUSE

(This expandable container house is widely used in Emergency Function, Disaster Relief, Remote Site Deployment, Field Clinic, Site Offices etc.)



Plans:



Features:

- 1.Floor: Steel structure+ Plywood +PVC vinyl flooring.
2. Wall: 50mm EPS sandwich panel .
- 3.Roof: Fiberglass sandwich panel.
- 4.Window: Aluminum casement windows.
- 5.Door: Sandwich panel doors.



5 Steps. One House

Presentation:



SHIPPING CONTAINER HOUSE

(This shipping container house is popular used for villa resort , hotel , office, accommodation s & shops.)



Size:2.438MX6.058MX2.896H



Features:

1. Structure: 20' HQ Shipping Container.
2. Flooring: 28mm Plywood + 3mm PVC Vinyl / WPC panel.
3. Ceiling: Corrugated steel sheet + 50mm AEPS sandwich panel + WPC ceiling.
4. Wall: Corrugated steel sheet + 50mm AEPS/IEPS sandwich panel.
5. Door: AEPS sandwich panel doors (With Smart card)+ Glass doors .
6. Balustrade: Square tube + Glass.

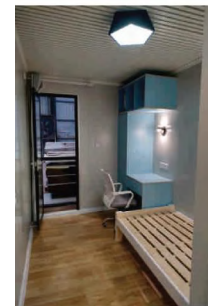


Container apartment

Inside:



Toilet



Bedroom



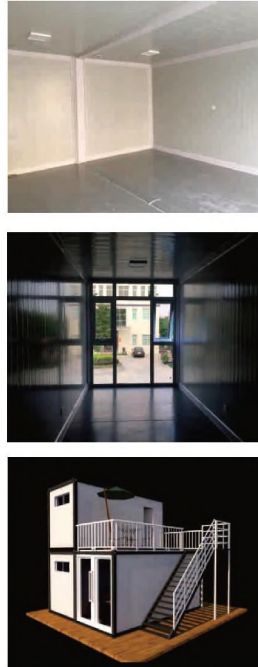
Transportation:



CONTAINER OFFICE

(This container office is combined by the flat pack container houses.
Two floors design, with offices, meeting room, public toilets and storage room.)

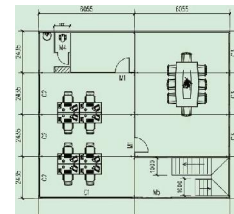
Type A



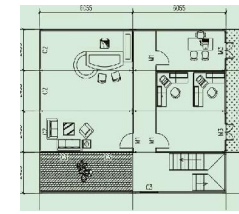
Features:

1. Combined by four units flat pack container house.
2. PVC glass window wall + 50mm EPS/IEPS/Rock wool/
Glass wool sandwich panel wall.
3. Electric wires run over ceiling, including DB,
breaker, power inlet & sockets.
4. Galvanized steel frame.
5. Aluminum double glass door & double glass windows.
6. PVC indoor lining.
7. Steel stair and balcony handrail. WPC panel for veranda flooring.

Type B



Ground floor

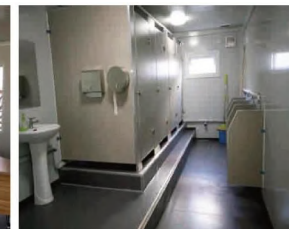


First floor



Balcony

Insides:



Office
Toilet

CONTAINER VILLA SERIES

(This container villa resort is made by the Detachable container house.)



Features:

1. Galvanized steel structure.
2. 50mm fireproof EPS sandwich panel for wall & roof.
3. Double glass sliding windows & aluminum sliding door.
4. 15mm MGO board for floor & PVC tile.
5. Modern design. Corrugated shape & steel veranda.



CONTAINER HOTELS SERIES



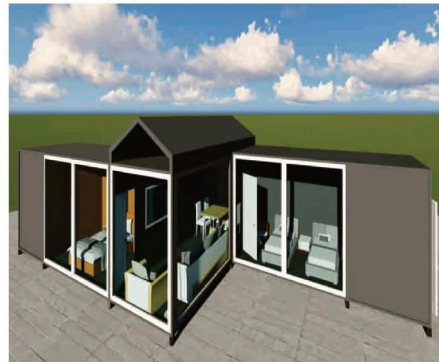
Type A 3MX6MX2.89H



Type B 3MX7.66MX2.89H



Type C 4.98MX5.95MX2.75HX2



Type D 2.49MX5.95MX2.75HX3



Type E 2.49MX5.95MX2.75H



Type F 7.055MX48.7MX8.67H

Features:

1. Combined by flat pack container houses.
2. Solution for Bedroom, Living room, Bathroom and Veranda.
3. Provided for Resort Projects.
4. Flexible and customized design.
5. Can do ceramic tile/ pvc tile, wall paper, gypsum board inside.
6. The electric system and water system can be installed as civil house.

Inside:

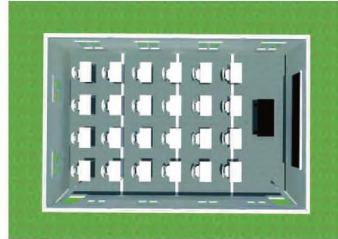


CLASSROOM SERIES

Container house design

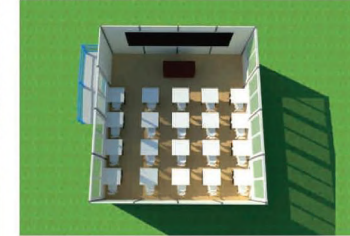


Type A (24 students)

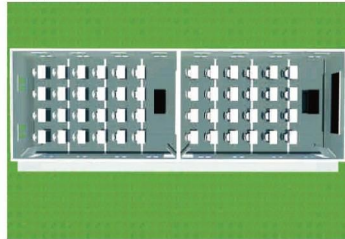


K house design

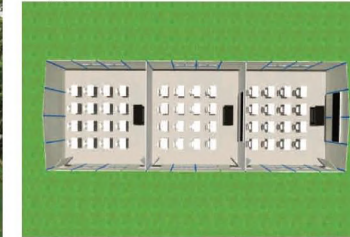
Type C (20 students)



Type B (96 students)



Type D (60 students)



A Inside:



PORTABLE TOILETS

(These portable toilets are widely used in playgrounds, parks, construction sites & labor camps.)



Type A

Type B

Type C

Type D



Guard house

Features:

- 1.50mm EPS sandwich panel for wall & roof.
- Steel base + aluminum checkered plate floor.
- Sitting toilet + exhaust fan + wash basin + electricity & water system.
- EPS panel door + aluminum shutter window.
- Four different designs for your choosing.



ACCESSORIES

DOOR



Sandwich Aluminum panel

Steel Aluminum panel

Roller shutter

WINDOW



Aluminum Sliding

Aluminum Shutter

FLOOR



Ceramic Tile

PVC Tile

Toilet



Wash Basin

Urinal

Squat Toilet

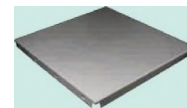


Sitting Toilet

Shower Head

Shower room

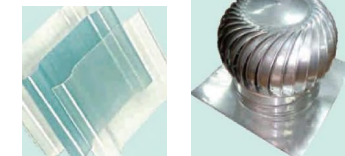
CEILING



300 Aluminum

600 PVC

ROOF



Lighting tile

Ventilation ball